



June 3, 2026

IGI Report Number **LG805691238**

ROUND BRILLIANT

LABORATORY GROWN DIAMOND

6.33 - 6.36 X 4.00 MM

Carat Weight **0.99 CARAT**

Color Grade **E**

Clarity Grade **VS 2**

Cut Grade **EXCELLENT**

Polish **EXCELLENT**

Symmetry **EXCELLENT**

Fluorescence **NONE**

Inscription(s) **IGI LG805691238**

Comments: This Laboratory Grown Diamond was created by Chemical Vapor Deposition (CVD) growth process. Type IIa

LABORATORY GROWN DIAMOND REPORT

June 3, 2026
IGI Report Number **LG805691238**
Description **LABORATORY GROWN DIAMOND**
Shape and Cutting Style **ROUND BRILLIANT**
Measurements **6.33 - 6.36 X 4.00 MM**

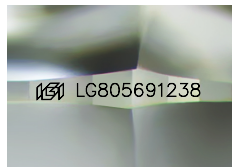
GRADING RESULTS

Carat Weight **0.99 CARAT**
Color Grade **E**
Clarity Grade **VS 2**
Cut Grade **EXCELLENT**

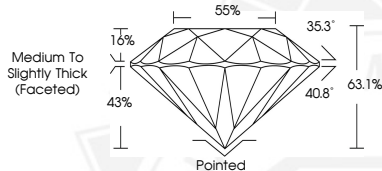
ADDITIONAL GRADING INFORMATION

Polish **EXCELLENT**
Symmetry **EXCELLENT**
Fluorescence **NONE**
Inscription(s) **IGI LG805691238**

Comments: This Laboratory Grown Diamond was created by Chemical Vapor Deposition (CVD) growth process. Type IIa



Sample Image Used



June 3, 2026

IGI Report Number **LG805691238**

ROUND BRILLIANT

LABORATORY GROWN DIAMOND

6.33 - 6.36 X 4.00 MM

Carat Weight **0.99 CARAT**

Color Grade **E**

Clarity Grade **VS 2**

Cut Grade **EXCELLENT**

Polish **EXCELLENT**

Symmetry **EXCELLENT**

Fluorescence **NONE**

Inscription(s) **IGI LG805691238**

Comments: This Laboratory Grown Diamond was created by Chemical Vapor Deposition (CVD) growth process. Type IIa



THIS DOCUMENT WAS PRODUCED WITH THE FOLLOWING SECURITY MEASURES: SPECIAL DOCUMENT PAPER, INK SCREENS, WATERMARK, BACKGROUND DESIGNS, HOLOGRAM AND OTHER SECURITY FEATURES NOT LISTED AND DO EXCEED DOCUMENT SECURITY INDUSTRY GUIDELINES.