



ELECTRONIC COPY

LG805691537 Report verification at igi.org



June 3, 2026 IGI Report Number LG805691537 Description LABORATORY GROWN DIAMOND Shape and Cutting Style ROUND BRILLIANT Measurements 7.96 - 8.02 X 5.04 MM GRADING RESULTS Carat Weight 2.00 CARATS Color Grade F Clarity Grade VS 1 Cut Grade EXCELLENT

June 3, 2026 IGI Report Number LG805691537 Description LABORATORY GROWN DIAMOND Shape and Cutting Style ROUND BRILLIANT Measurements 7.96 - 8.02 X 5.04 MM

GRADING RESULTS

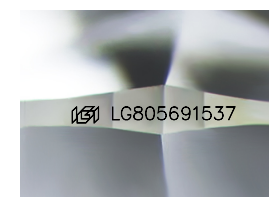
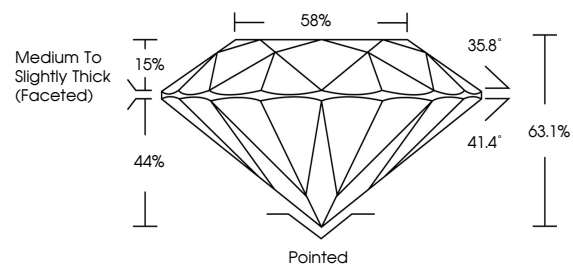
Carat Weight 2.00 CARATS Color Grade F Clarity Grade VS 1 Cut Grade EXCELLENT

ADDITIONAL GRADING INFORMATION

Polish EXCELLENT Symmetry EXCELLENT Fluorescence NONE Inscription(s) IGI LG805691537

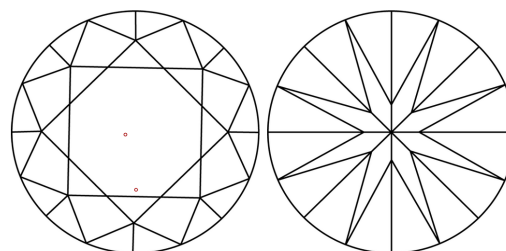
Comments: This Laboratory Grown Diamond was created by Chemical Vapor Deposition (CVD) growth process. Type IIa

PROPORTIONS



Sample Image Used

CLARITY CHARACTERISTICS



KEY TO SYMBOLS

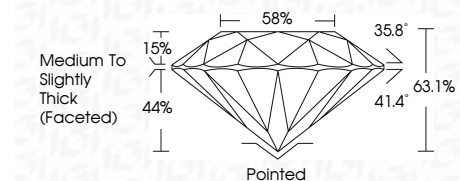
Red symbols indicate internal characteristics. Green symbols indicate external characteristics.

COLOR

D E F G H I J Faint Very Light Light

CLARITY

FL IF VS 1-2 VS 1-2 SI 1-2 I 1-3 Flawless Internally Flawless Very Very Slightly Included Very Slightly Included Slightly Included Included



ADDITIONAL GRADING INFORMATION

Polish EXCELLENT Symmetry EXCELLENT Fluorescence NONE Inscription(s) IGI LG805691537 Comments: This Laboratory Grown Diamond was created by Chemical Vapor Deposition (CVD) growth process. Type IIa



June 3, 2026 IGI Report No. LG805691537 ROUND BRILLIANT 2.00 CARATS F Color Grade VS 1 EXCELLENT 63.1% Depth 58% Table Medium To Slightly Thick (Faceted) Pointed EXCELLENT EXCELLENT NONE IGI LG805691537 Comments: This Laboratory Grown Diamond was created by Chemical Vapor Deposition (CVD) growth process. Type IIa