



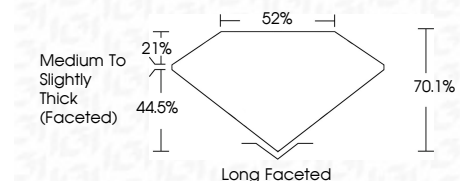
**ELECTRONIC COPY**

LG805692051  
Report verification at [igi.org](http://igi.org)



May 30, 2026  
IGI Report Number **LG805692051**  
Description **LABORATORY GROWN DIAMOND**  
Shape and Cutting Style **CUSHION BRILLIANT**  
Measurements **10.13 X 7.63 X 5.35 MM**

**GRADING RESULTS**  
Carat Weight **3.07 CARATS**  
Color Grade **E**  
Clarity Grade **VS 1**



**ADDITIONAL GRADING INFORMATION**  
Polish **EXCELLENT**  
Symmetry **EXCELLENT**  
Fluorescence **NONE**  
Inscription(s) **IGI LG805692051**  
Comments: This Laboratory Grown Diamond was created by Chemical Vapor Deposition (CVD) growth process. Type IIa



May 30, 2026  
IGI Report No LG805692051  
**CUSHION BRILLIANT**  
10.13 X 7.63 X 5.35 MM  
3.07 CARATS  
E  
VS 1  
70.1%  
44.5%  
52%  
Medium to Slightly Thick (Faceted)  
Long Faceted  
EXCELLENT  
EXCELLENT  
NONE  
IGI LG805692051  
Comments: This Laboratory Grown Diamond was created by Chemical Vapor Deposition (CVD) growth process. Type IIa

**LABORATORY GROWN DIAMOND REPORT**

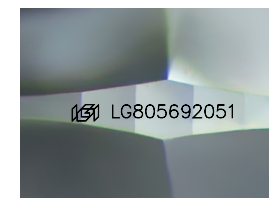
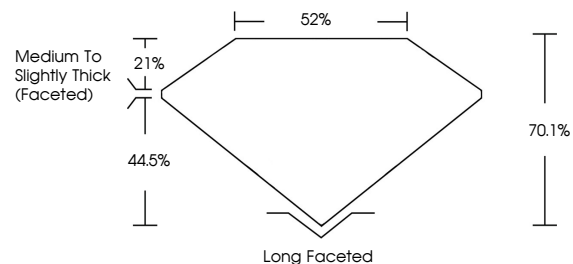
May 30, 2026  
IGI Report Number **LG805692051**  
Description **LABORATORY GROWN DIAMOND**  
Shape and Cutting Style **CUSHION BRILLIANT**  
Measurements **10.13 X 7.63 X 5.35 MM**

**GRADING RESULTS**  
Carat Weight **3.07 CARATS**  
Color Grade **E**  
Clarity Grade **VS 1**

**ADDITIONAL GRADING INFORMATION**  
Polish **EXCELLENT**  
Symmetry **EXCELLENT**  
Fluorescence **NONE**  
Inscription(s) **IGI LG805692051**

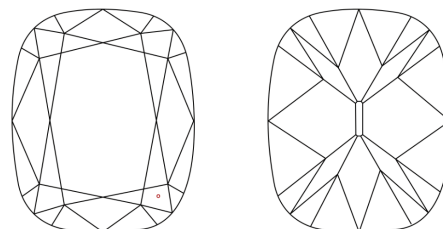
Comments: This Laboratory Grown Diamond was created by Chemical Vapor Deposition (CVD) growth process. Type IIa

**PROPORTIONS**



Sample Image Used

**CLARITY CHARACTERISTICS**



**KEY TO SYMBOLS**

Red symbols indicate internal characteristics.  
Green symbols indicate external characteristics.

**COLOR**

D E F G H I J Faint Very Light Light

**CLARITY**

FL	IF	VS <sup>1-2</sup>	VS <sup>1-2</sup>	SI <sup>1-2</sup>	I <sup>1-3</sup>
Flawless	Internally Flawless	Very Very Slightly Included	Very Slightly Included	Slightly Included	Included

