



June 1, 2026

IGI Report Number **LG805692310**

PEAR BRILLIANT

LABORATORY GROWN DIAMOND

8.74 X 5.53 X 3.46 MM

Carat Weight **0.98 CARAT**

Color Grade **E**

Clarity Grade **VVS 2**

Polish **EXCELLENT**

Symmetry **EXCELLENT**

Fluorescence **NONE**

Inscription(s) **IGI LG805692310**

Comments: This Laboratory Grown Diamond was created by Chemical Vapor Deposition (CVD) growth process. Type IIa

LABORATORY GROWN DIAMOND REPORT

June 1, 2026
IGI Report Number **LG805692310**
Description **LABORATORY GROWN DIAMOND**
Shape and Cutting Style **PEAR BRILLIANT**
Measurements **8.74 X 5.53 X 3.46 MM**

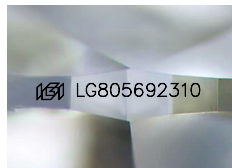
GRADING RESULTS

Carat Weight **0.98 CARAT**
Color Grade **E**
Clarity Grade **VVS 2**

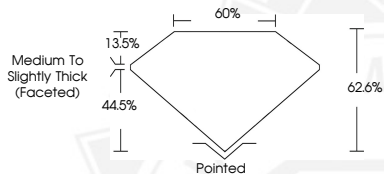
ADDITIONAL GRADING INFORMATION

Polish **EXCELLENT**
Symmetry **EXCELLENT**
Fluorescence **NONE**
Inscription(s) **IGI LG805692310**

Comments: This Laboratory Grown Diamond was created by Chemical Vapor Deposition (CVD) growth process.
Type IIa



Sample Image Used



June 1, 2026

IGI Report Number **LG805692310**

PEAR BRILLIANT

LABORATORY GROWN DIAMOND

8.74 X 5.53 X 3.46 MM

Carat Weight **0.98 CARAT**

Color Grade **E**

Clarity Grade **VVS 2**

Polish **EXCELLENT**

Symmetry **EXCELLENT**

Fluorescence **NONE**

Inscription(s) **IGI LG805692310**

Comments: This Laboratory Grown Diamond was created by Chemical Vapor Deposition (CVD) growth process. Type IIa



THIS DOCUMENT WAS PRODUCED WITH THE FOLLOWING SECURITY MEASURES: SPECIAL DOCUMENT PAPER, INK SCREENS, WATERMARK, BACKGROUND DESIGNS, HOLOGRAM AND OTHER SECURITY FEATURES NOT LISTED AND DO EXCEED DOCUMENT SECURITY INDUSTRY GUIDELINES.