



ELECTRONIC COPY

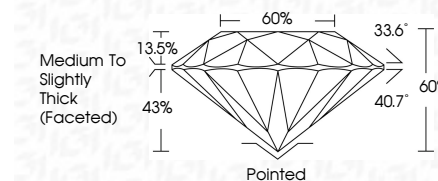
LG805693151
Report verification at igi.org



June 4, 2026
IGI Report Number LG805693151
Description LABORATORY GROWN DIAMOND
Shape and Cutting Style ROUND BRILLIANT
Measurements 13.02 - 13.06 X 7.83 MM

GRADING RESULTS

Carat Weight 8.20 CARATS
Color Grade G
Clarity Grade VS 2
Cut Grade IDEAL



ADDITIONAL GRADING INFORMATION

Polish EXCELLENT
Symmetry EXCELLENT
Fluorescence NONE
Inscription(s) IGI LG805693151
Comments: This Laboratory Grown Diamond was created by Chemical Vapor Deposition (CVD) growth process. Type IIa



June 4, 2026
IGI Report No LG805693151
ROUND BRILLIANT
8.20 CARATS G
13.02 - 13.06 X 7.83 MM VS 2 IDEAL 60% 60%
Medium To Slightly Thick (Faceted)
Pointed EXCELLENT EXCELLENT NONE
IGI LG805693151
Comments: This Laboratory Grown Diamond was created by Chemical Vapor Deposition (CVD) growth process. Type IIa

June 4, 2026
IGI Report Number LG805693151
Description LABORATORY GROWN DIAMOND
Shape and Cutting Style ROUND BRILLIANT
Measurements 13.02 - 13.06 X 7.83 MM

GRADING RESULTS

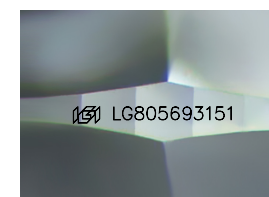
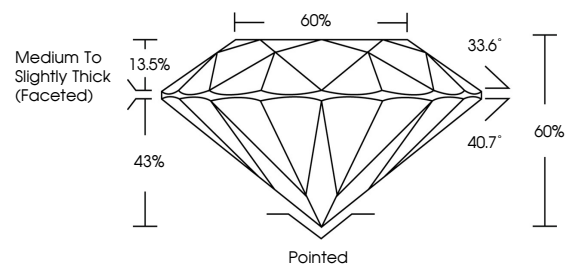
Carat Weight 8.20 CARATS
Color Grade G
Clarity Grade VS 2
Cut Grade IDEAL

ADDITIONAL GRADING INFORMATION

Polish EXCELLENT
Symmetry EXCELLENT
Fluorescence NONE
Inscription(s) IGI LG805693151

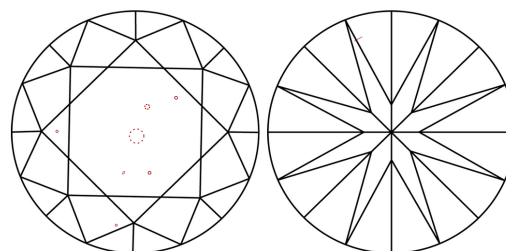
Comments: This Laboratory Grown Diamond was created by Chemical Vapor Deposition (CVD) growth process. Type IIa

PROPORTIONS



Sample Image Used

CLARITY CHARACTERISTICS



KEY TO SYMBOLS

Red symbols indicate internal characteristics.
Green symbols indicate external characteristics.

COLOR

D E F G H I J Faint Very Light Light

CLARITY

FL IF VS 1-2 VS 1-2 SI 1-2 I 1-3
Flawless Internally Flawless Very Very Slightly Included Very Slightly Included Slightly Included Included

