



June 1, 2026

**IGI Report Number** LG805699990  
**ROUND BRILLIANT**  
**LABORATORY GROWN DIAMOND**  
**4.71 - 4.75 X 2.83 MM**

Carat Weight	<b>0.39 CARAT</b>
Color Grade	<b>D</b>
Clarity Grade	<b>VVS 1</b>
Cut Grade	<b>EXCELLENT</b>
Polish	<b>EXCELLENT</b>
Symmetry	<b>EXCELLENT</b>
Fluorescence	<b>NONE</b>
Inscription(s)	<b>IGI LG805699990</b>

Comments: This Laboratory Grown Diamond was created by Chemical Vapor Deposition (CVD) growth process. Type IIa

**LABORATORY GROWN DIAMOND REPORT**

June 1, 2026  
IGI Report Number **LG805699990**  
Description **LABORATORY GROWN DIAMOND**  
Shape and Cutting Style **ROUND BRILLIANT**  
Measurements **4.71 - 4.75 X 2.83 MM**

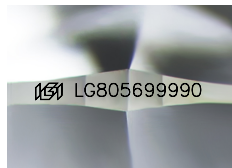
**GRADING RESULTS**

Carat Weight **0.39 CARAT**  
Color Grade **D**  
Clarity Grade **VVS 1**  
Cut Grade **EXCELLENT**

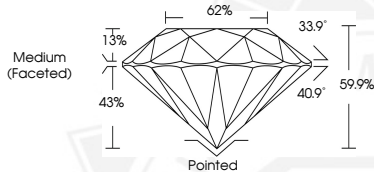
**ADDITIONAL GRADING INFORMATION**

Polish **EXCELLENT**  
Symmetry **EXCELLENT**  
Fluorescence **NONE**  
Inscription(s) **IGI LG805699990**

Comments: This Laboratory Grown Diamond was created by Chemical Vapor Deposition (CVD) growth process. Type IIa



Sample Image Used



June 1, 2026

**IGI Report Number** LG805699990  
**ROUND BRILLIANT**  
**LABORATORY GROWN DIAMOND**  
**4.71 - 4.75 X 2.83 MM**

Carat Weight	<b>0.39 CARAT</b>
Color Grade	<b>D</b>
Clarity Grade	<b>VVS 1</b>
Cut Grade	<b>EXCELLENT</b>
Polish	<b>EXCELLENT</b>
Symmetry	<b>EXCELLENT</b>
Fluorescence	<b>NONE</b>
Inscription(s)	<b>IGI LG805699990</b>

Comments: This Laboratory Grown Diamond was created by Chemical Vapor Deposition (CVD) growth process. Type IIa



THIS DOCUMENT WAS PRODUCED WITH THE FOLLOWING SECURITY MEASURES: SPECIAL DOCUMENT PAPER, INK SCREENS, WATERMARK, BACKGROUND DESIGNS, HOLOGRAM AND OTHER SECURITY FEATURES NOT LISTED AND DO EXCEED DOCUMENT SECURITY INDUSTRY GUIDELINES.