



ELECTRONIC COPY

LG806602145 Report verification at igi.org



June 4, 2026 IGI Report Number LG806602145 Description LABORATORY GROWN DIAMOND Shape and Cutting Style ROUND BRILLIANT Measurements 6.46 - 6.49 X 3.99 MM GRADING RESULTS Carat Weight 1.02 CARAT Color Grade F Clarity Grade VS 1 Cut Grade IDEAL

June 4, 2026 IGI Report Number LG806602145 Description LABORATORY GROWN DIAMOND Shape and Cutting Style ROUND BRILLIANT Measurements 6.46 - 6.49 X 3.99 MM

GRADING RESULTS

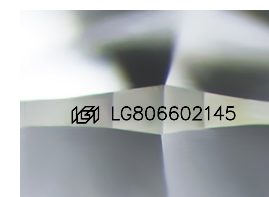
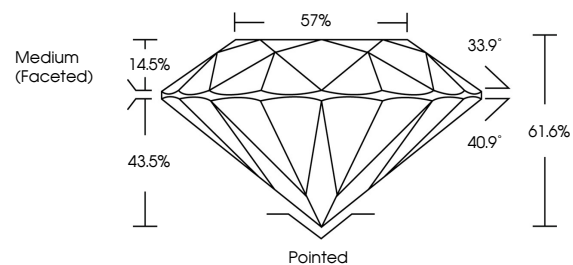
Carat Weight 1.02 CARAT Color Grade F Clarity Grade VS 1 Cut Grade IDEAL

ADDITIONAL GRADING INFORMATION

Polish EXCELLENT Symmetry EXCELLENT Fluorescence NONE Inscription(s) IGI LG806602145

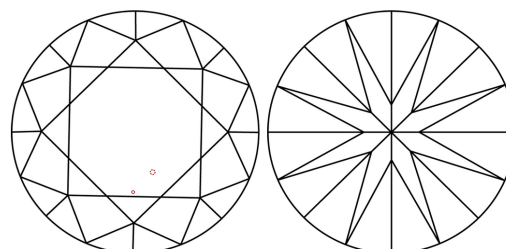
Comments: This Laboratory Grown Diamond was created by Chemical Vapor Deposition (CVD) growth process. Type IIa

PROPORTIONS



Sample Image Used

CLARITY CHARACTERISTICS



KEY TO SYMBOLS

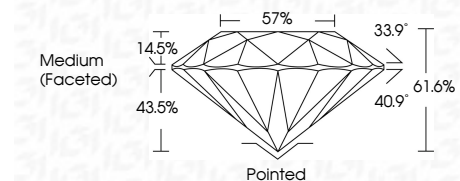
Red symbols indicate internal characteristics. Green symbols indicate external characteristics.

COLOR

D E F G H I J Faint Very Light Light

CLARITY

FL IF VS 1-2 VS 2-3 SI 1-2 I 1-3 Flawless Internally Flawless Very Very Slightly Included Very Slightly Included Slightly Included Included



ADDITIONAL GRADING INFORMATION

Polish EXCELLENT Symmetry EXCELLENT Fluorescence NONE Inscription(s) IGI LG806602145 Comments: This Laboratory Grown Diamond was created by Chemical Vapor Deposition (CVD) growth process. Type IIa



June 4, 2026 IGI Report No LG806602145 ROUND BRILLIANT 6.46 - 6.49 X 3.99 MM 1.02 CARAT F VS 1 IDEAL 61.6% 57% Medium (Faceted) Pointed EXCELLENT EXCELLENT NONE NONE IGI LG806602145 Comments: This Laboratory Grown Diamond was created by Chemical Vapor Deposition (CVD) growth process. Type IIa