



ELECTRONIC COPY

LG806602315 Report verification at igi.org



June 4, 2026 IGI Report Number LG806602315 Description LABORATORY GROWN DIAMOND Shape and Cutting Style CUT CORNERED RECTANGULAR MODIFIED BRILLIANT Measurements 11.80 X 8.34 X 5.67 MM GRADING RESULTS Carat Weight 4.83 CARATS Color Grade E Clarity Grade VS 1

LABORATORY GROWN DIAMOND REPORT

June 4, 2026 IGI Report Number LG806602315 Description LABORATORY GROWN DIAMOND Shape and Cutting Style CUT CORNERED RECTANGULAR MODIFIED BRILLIANT Measurements 11.80 X 8.34 X 5.67 MM

GRADING RESULTS

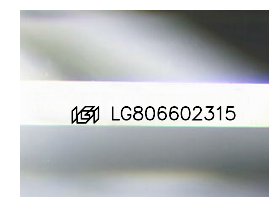
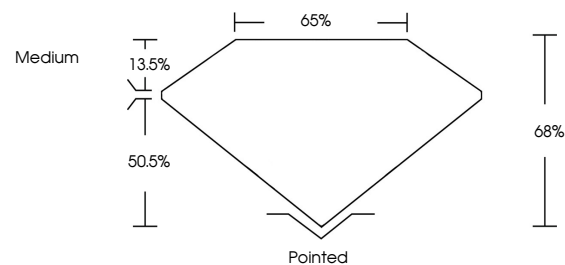
Carat Weight 4.83 CARATS Color Grade E Clarity Grade VS 1

ADDITIONAL GRADING INFORMATION

Polish EXCELLENT Symmetry EXCELLENT Fluorescence NONE Inscription(s) LG806602315

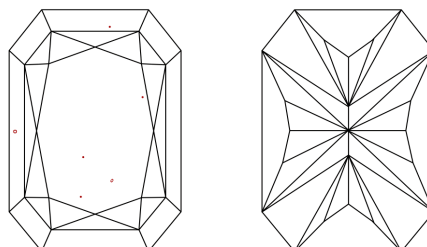
Comments: This Laboratory Grown Diamond was created by Chemical Vapor Deposition (CVD) growth process. Type IIa

PROPORTIONS



Sample Image Used

CLARITY CHARACTERISTICS



KEY TO SYMBOLS

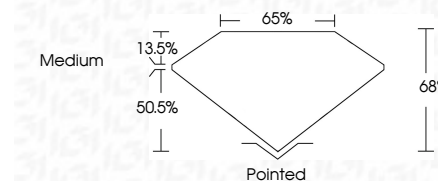
Red symbols indicate internal characteristics. Green symbols indicate external characteristics.

COLOR

D E F G H I J Faint Very Light Light

CLARITY

FL IF VS 1-2 VS 2-3 SI 1-2 I 1-3 Flawless Internally Flawless Very Very Slightly Included Very Slightly Included Slightly Included Included



ADDITIONAL GRADING INFORMATION

Polish EXCELLENT Symmetry EXCELLENT Fluorescence NONE Inscription(s) LG806602315 Comments: This Laboratory Grown Diamond was created by Chemical Vapor Deposition (CVD) growth process. Type IIa



June 4, 2026 IGI Report No LG806602315 CUT CORNERED RECT. MODIFIED BRILLIANT 11.80 X 8.34 X 5.67 MM 4.83 CARATS E VS 1 68% 65% Medium Pointed EXCELLENT EXCELLENT NONE LG806602315 Comments: This Laboratory Grown Diamond was created by Chemical Vapor Deposition (CVD) growth process. Type IIa