



ELECTRONIC COPY

LG806612607 Report verification at igi.org



June 4, 2026
IGI Report Number LG806612607
Description LABORATORY GROWN DIAMOND
Shape and Cutting Style ROUND BRILLIANT
Measurements 6.60 - 6.64 X 4.02 MM
GRADING RESULTS
Carat Weight 1.08 CARAT
Color Grade E
Clarity Grade VS 1
Cut Grade IDEAL

June 4, 2026
IGI Report Number LG806612607
Description LABORATORY GROWN DIAMOND
Shape and Cutting Style ROUND BRILLIANT
Measurements 6.60 - 6.64 X 4.02 MM

GRADING RESULTS

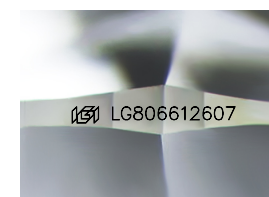
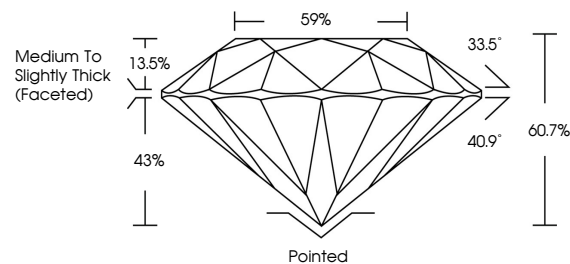
Carat Weight 1.08 CARAT
Color Grade E
Clarity Grade VS 1
Cut Grade IDEAL

ADDITIONAL GRADING INFORMATION

Polish EXCELLENT
Symmetry EXCELLENT
Fluorescence NONE
Inscription(s) IGI LG806612607

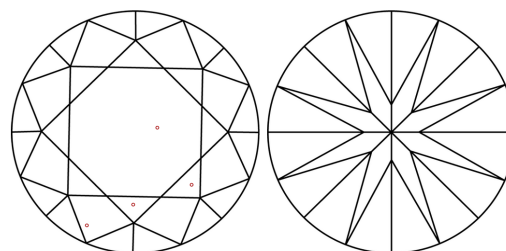
Comments: This Laboratory Grown Diamond was created by Chemical Vapor Deposition (CVD) growth process. Type IIa

PROPORTIONS



Sample Image Used

CLARITY CHARACTERISTICS



KEY TO SYMBOLS

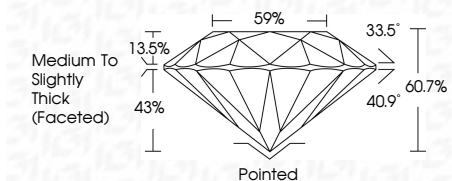
Red symbols indicate internal characteristics.
Green symbols indicate external characteristics.

COLOR

D E F G H I J Faint Very Light Light

CLARITY

FL IF VS 1-2 VS 2-3 SI 1-2 I 1-3
Flawless Internally Flawless Very Very Slightly Included Very Slightly Included Slightly Included Included



ADDITIONAL GRADING INFORMATION

Polish EXCELLENT
Symmetry EXCELLENT
Fluorescence NONE
Inscription(s) IGI LG806612607
Comments: This Laboratory Grown Diamond was created by Chemical Vapor Deposition (CVD) growth process. Type IIa



IGI



June 4, 2026
IGI Report No LG806612607
ROUND BRILLIANT
6.60 - 6.64 X 4.02 MM
1.08 CARAT E
Color Grade VS 1
Clarity Grade IDEAL
Depth 60.7%
Table 59%
Medium To Slightly Thick (Faceted)
Cutler Pointed
Polish EXCELLENT
Symmetry EXCELLENT
Fluorescence NONE
Inscriptions(s) IGI LG806612607
Comments: This Laboratory Grown Diamond was created by Chemical Vapor Deposition (CVD) growth process. Type IIa