



**INTERNATIONAL  
GEMOLOGICAL  
INSTITUTE**

**LABORATORY GROWN DIAMOND REPORT**

May 30, 2026  
 IGI Report Number **LG806614846**  
 Description **LABORATORY GROWN DIAMOND**  
 Shape and Cutting Style **ROUND BRILLIANT**  
 Measurements **5.72 - 5.77 X 3.47 MM**

**GRADING RESULTS**

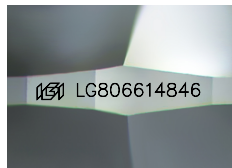
Carat Weight **0.71 CARAT**  
 Color Grade **D**  
 Clarity Grade **VVS 2**  
 Cut Grade **IDEAL**

**ADDITIONAL GRADING INFORMATION**

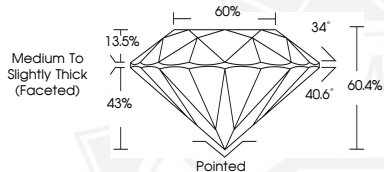
Polish **EXCELLENT**  
 Symmetry **EXCELLENT**  
 Fluorescence **NONE**  
 Inscription(s) **IGI LG806614846**

Comments: As Grown - No indication of post-growth treatment. This Laboratory Grown Diamond was created by High Pressure High Temperature (HPHT) growth process. Type II

**ELECTRONIC COPY**



Sample Image Used



May 30, 2026

IGI Report Number **LG806614846**  
**ROUND BRILLIANT**  
**LABORATORY GROWN DIAMOND**  
**5.72 - 5.77 X 3.47 MM**  
 Carat Weight **0.71 CARAT**  
 Color Grade **D**  
 Clarity Grade **VVS 2**  
 Cut Grade **IDEAL**  
 Polish **EXCELLENT**  
 Symmetry **EXCELLENT**  
 Fluorescence **NONE**  
 Inscription(s) **IGI LG806614846**

Comments: As Grown - No indication of post-growth treatment. This Laboratory Grown Diamond was created by High Pressure High Temperature (HPHT) growth process. Type II



May 30, 2026

IGI Report Number **LG806614846**  
**ROUND BRILLIANT**  
**LABORATORY GROWN DIAMOND**  
**5.72 - 5.77 X 3.47 MM**  
 Carat Weight **0.71 CARAT**  
 Color Grade **D**  
 Clarity Grade **VVS 2**  
 Cut Grade **IDEAL**  
 Polish **EXCELLENT**  
 Symmetry **EXCELLENT**  
 Fluorescence **NONE**  
 Inscription(s) **IGI LG806614846**

Comments: As Grown - No indication of post-growth treatment. This Laboratory Grown Diamond was created by High Pressure High Temperature (HPHT) growth process. Type II



THIS DOCUMENT WAS PRODUCED WITH THE FOLLOWING SECURITY MEASURES: SPECIAL DOCUMENT PAPER, INK SCREENS, WATERMARK, BACKGROUND DESIGNS, HOLOGRAM AND OTHER SECURITY FEATURES NOT LISTED AND DO EXCEED DOCUMENT SECURITY INDUSTRY GUIDELINES.

For terms & conditions and to verify this report, please visit [www.igi.org](http://www.igi.org)