



May 30, 2026

IGI Report Number **LG806614906**

**HEART BRILLIANT  
LABORATORY GROWN DIAMOND**

**5.97 X 6.26 X 3.56 MM**

Carat Weight	<b>0.74 CARAT</b>
Color Grade	<b>D</b>
Clarity Grade	<b>VVS 1</b>
Polish	<b>EXCELLENT</b>
Symmetry	<b>EXCELLENT</b>
Fluorescence	<b>NONE</b>
Inscription(s)	<b>IGI LG806614906</b>

Comments: As Grown - No indication of post-growth treatment. This Laboratory Grown Diamond was created by High Pressure High Temperature (HPHT) growth process. Type II

**LABORATORY GROWN DIAMOND REPORT**

May 30, 2026  
IGI Report Number **LG806614906**  
Description **LABORATORY GROWN DIAMOND**  
Shape and Cutting Style **HEART BRILLIANT**  
Measurements **5.97 X 6.26 X 3.56 MM**

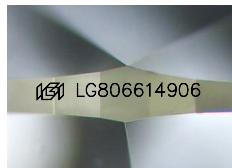
**GRADING RESULTS**

Carat Weight **0.74 CARAT**  
Color Grade **D**  
Clarity Grade **VVS 1**

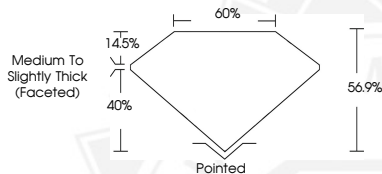
**ADDITIONAL GRADING INFORMATION**

Polish **EXCELLENT**  
Symmetry **EXCELLENT**  
Fluorescence **NONE**  
Inscription(s) **IGI LG806614906**

Comments: As Grown - No indication of post-growth treatment. This Laboratory Grown Diamond was created by High Pressure High Temperature (HPHT) growth process. Type II



Sample Image Used



May 30, 2026

IGI Report Number **LG806614906**

**HEART BRILLIANT  
LABORATORY GROWN DIAMOND**

**5.97 X 6.26 X 3.56 MM**

Carat Weight	<b>0.74 CARAT</b>
Color Grade	<b>D</b>
Clarity Grade	<b>VVS 1</b>
Polish	<b>EXCELLENT</b>
Symmetry	<b>EXCELLENT</b>
Fluorescence	<b>NONE</b>
Inscription(s)	<b>IGI LG806614906</b>

Comments: As Grown - No indication of post-growth treatment. This Laboratory Grown Diamond was created by High Pressure High Temperature (HPHT) growth process. Type II

THIS DOCUMENT WAS PRODUCED WITH THE FOLLOWING SECURITY MEASURES: SPECIAL DOCUMENT PAPER, INK SCREENS, WATERMARK, BACKGROUND DESIGNS, HOLOGRAM AND OTHER SECURITY FEATURES NOT LISTED AND DO EXCEED DOCUMENT SECURITY INDUSTRY GUIDELINES.