



ELECTRONIC COPY

LG806617353 Report verification at igi.org



June 1, 2026 IGI Report Number LG806617353 Description LABORATORY GROWN DIAMOND Shape and Cutting Style CUT CORNERED RECTANGULAR MODIFIED BRILLIANT Measurements 8.89 X 6.30 X 4.19 MM GRADING RESULTS Carat Weight 2.05 CARATS Color Grade G Clarity Grade VVS 2

LABORATORY GROWN DIAMOND REPORT

June 1, 2026 IGI Report Number LG806617353 Description LABORATORY GROWN DIAMOND Shape and Cutting Style CUT CORNERED RECTANGULAR MODIFIED BRILLIANT Measurements 8.89 X 6.30 X 4.19 MM

GRADING RESULTS

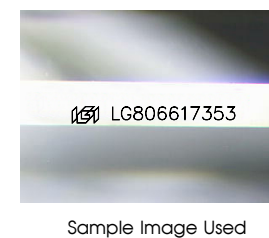
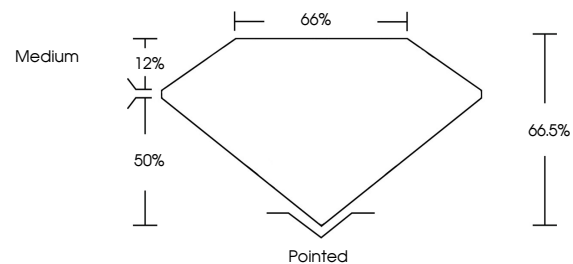
Carat Weight 2.05 CARATS Color Grade G Clarity Grade VVS 2

ADDITIONAL GRADING INFORMATION

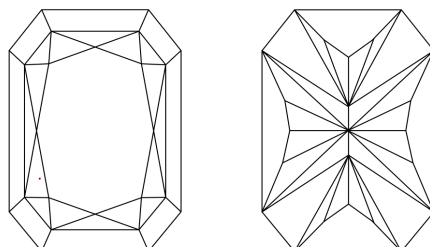
Polish EXCELLENT Symmetry EXCELLENT Fluorescence NONE Inscription(s) LG806617353

Comments: This Laboratory Grown Diamond was created by Chemical Vapor Deposition (CVD) growth process. Type IIa

PROPORTIONS



CLARITY CHARACTERISTICS



KEY TO SYMBOLS

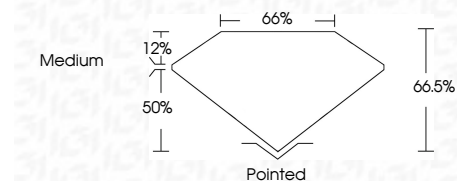
Red symbols indicate internal characteristics. Green symbols indicate external characteristics.

COLOR

D E F G H I J Faint Very Light Light

CLARITY

FL IF VVS 1-2 VS 1-2 SI 1-2 I 1-3 Flawless Internally Flawless Very Very Slightly Included Very Slightly Included Slightly Included Included



ADDITIONAL GRADING INFORMATION

Polish EXCELLENT Symmetry EXCELLENT Fluorescence NONE Inscription(s) LG806617353 Comments: This Laboratory Grown Diamond was created by Chemical Vapor Deposition (CVD) growth process. Type IIa



June 1, 2026 IGI Report No LG806617353 CUT CORNERED RECT. MODIFIED BRILLIANT 8.89 X 6.30 X 4.19 MM 2.05 CARATS G VVS 2 66.6% 65% Medium Pointed EXCELLENT EXCELLENT NONE LG806617353 Comments: This Laboratory Grown Diamond was created by Chemical Vapor Deposition (CVD) growth process. Type IIa