



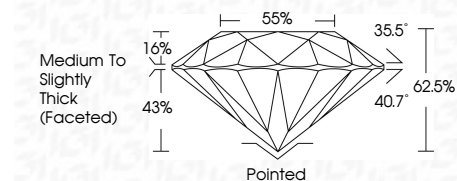
ELECTRONIC COPY

LG806624781 Report verification at igi.org



June 5, 2026 IGI Report Number LG806624781 Description LABORATORY GROWN DIAMOND Shape and Cutting Style ROUND BRILLIANT Measurements 6.50 - 6.53 X 4.07 MM

GRADING RESULTS Carat Weight 1.06 CARAT Color Grade D Clarity Grade VS 1 Cut Grade IDEAL

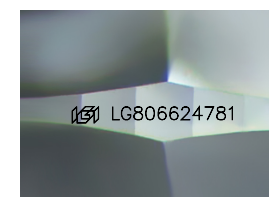


ADDITIONAL GRADING INFORMATION Polish EXCELLENT Symmetry EXCELLENT Fluorescence NONE Inscription(s) IGI LG806624781 Comments: This Laboratory Grown Diamond was created by Chemical Vapor Deposition (CVD) growth process. Type IIa



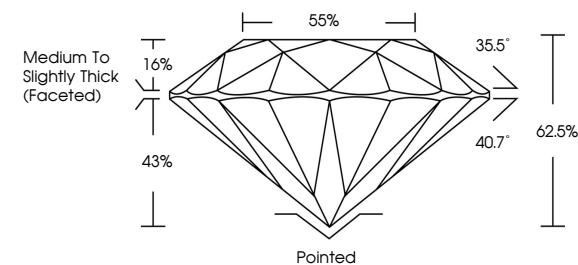
June 5, 2026 IGI Report No LG806624781 ROUND BRILLIANT 6.50 - 6.53 X 4.07 MM 1.06 CARAT D VS 1 IDEAL 62.5% 85% Medium To Slightly Thick (Faceted) Pointed EXCELLENT EXCELLENT NONE IGI LG806624781

Comments: This Laboratory Grown Diamond was created by Chemical Vapor Deposition (CVD) growth process. Type IIa

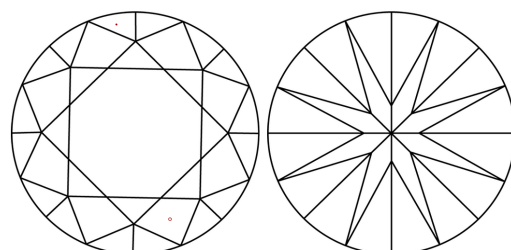


Sample Image Used

PROPORTIONS



CLARITY CHARACTERISTICS



KEY TO SYMBOLS

Red symbols indicate internal characteristics. Green symbols indicate external characteristics.

COLOR

D E F G H I J Faint Very Light Light

CLARITY

FL IF VS 1-2 VS 1-2 SI 1-2 I 1-3 Flawless Internally Flawless Very Very Slightly Included Very Slightly Included Slightly Included Included

