



ELECTRONIC COPY

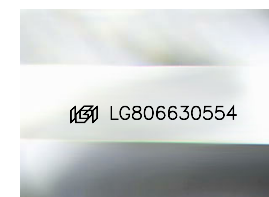
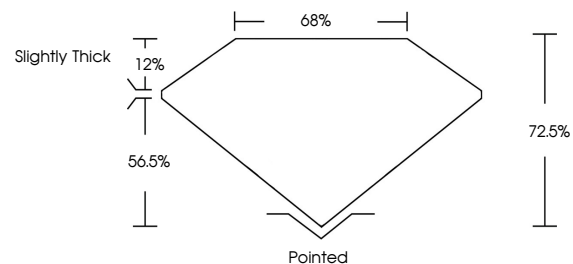
LG806630554
Report verification at igi.org



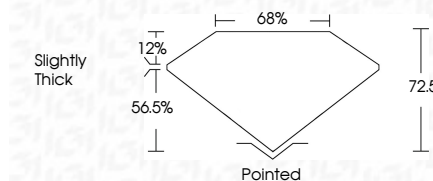
June 6, 2026
IGI Report Number **LG806630554**
Description **LABORATORY GROWN DIAMOND**
Shape and Cutting Style **PRINCESS CUT**
Measurements **5.60 X 5.45 X 3.95 MM**
GRADING RESULTS
Carat Weight **1.04 CARAT**
Color Grade **H**
Clarity Grade **VS 1**

June 6, 2026
IGI Report Number **LG806630554**
Description **LABORATORY GROWN DIAMOND**
Shape and Cutting Style **PRINCESS CUT**
Measurements **5.60 X 5.45 X 3.95 MM**
GRADING RESULTS
Carat Weight **1.04 CARAT**
Color Grade **H**
Clarity Grade **VS 1**

PROPORTIONS



Sample Image Used



ADDITIONAL GRADING INFORMATION

Polish **EXCELLENT**
Symmetry **EXCELLENT**
Fluorescence **NONE**
Inscription(s) **IGI LG806630554**

Comments: This Laboratory Grown Diamond was created by Chemical Vapor Deposition (CVD) growth process.
Type IIa

ADDITIONAL GRADING INFORMATION

Polish **EXCELLENT**
Symmetry **EXCELLENT**
Fluorescence **NONE**
Inscription(s) **IGI LG806630554**
Comments: This Laboratory Grown Diamond was created by Chemical Vapor Deposition (CVD) growth process.
Type IIa

COLOR

D E F G H I J Faint Very Light Light

CLARITY

FL	IF	VS ¹⁻²	VS ¹⁻²	SI ¹⁻²	I ¹⁻³
Flawless	Internally Flawless	Very Very Slightly Included	Very Slightly Included	Slightly Included	Included



IGI



June 6, 2026
IGI Report No **LG806630554**
PRINCESS CUT
5.60 X 5.45 X 3.95 MM
Carat Weight **1.04 CARAT**
Color Grade **H**
Clarity Grade **VS 1**
Table **72.5%**
Girdle **65%**
Culet **Slightly Thick**
Polish **Pointed**
Symmetry **EXCELLENT**
Fluorescence **NONE**
Inscription(s) **IGI LG806630554**
Comments: This Laboratory Grown Diamond was created by Chemical Vapor Deposition (CVD) growth process.
Type IIa