



ELECTRONIC COPY

LG806630669 Report verification at igi.org



June 9, 2026 IGI Report Number LG806630669 Description LABORATORY GROWN DIAMOND Shape and Cutting Style CUT CORNERED RECTANGULAR MODIFIED BRILLIANT Measurements 7.90 X 5.72 X 3.72 MM GRADING RESULTS Carat Weight 1.51 CARAT Color Grade FANCY VIVID BLUE Clarity Grade VVS 2

June 9, 2026 IGI Report Number LG806630669 Description LABORATORY GROWN DIAMOND Shape and Cutting Style CUT CORNERED RECTANGULAR MODIFIED BRILLIANT Measurements 7.90 X 5.72 X 3.72 MM

GRADING RESULTS

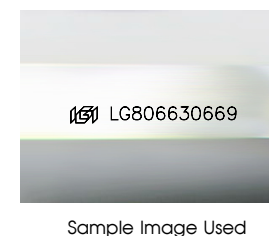
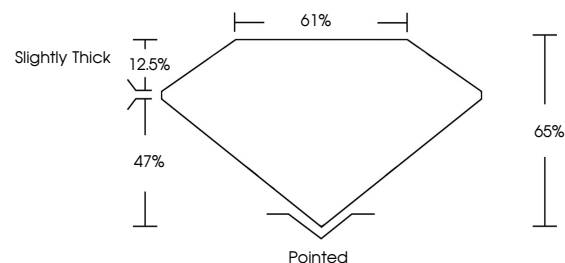
Carat Weight 1.51 CARAT Color Grade FANCY VIVID BLUE Clarity Grade VVS 2

ADDITIONAL GRADING INFORMATION

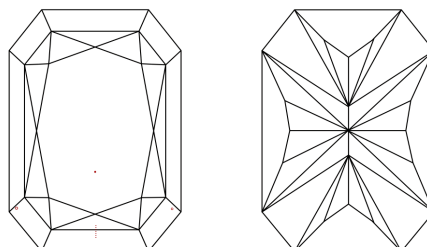
Polish EXCELLENT Symmetry EXCELLENT Fluorescence NONE Inscription(s) IGI LG806630669

Comments: This Laboratory Grown Diamond was created by Chemical Vapor Deposition (CVD) growth process. Indications of post-growth treatment.

PROPORTIONS



CLARITY CHARACTERISTICS



KEY TO SYMBOLS

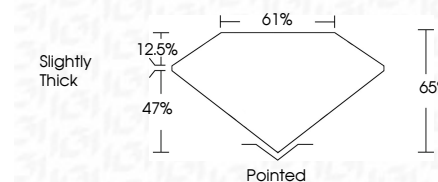
Red symbols indicate internal characteristics. Green symbols indicate external characteristics.

COLOR

D E F G H I J Faint Very Light Light

CLARITY

FL IF VVS 1-2 VS 1-2 SI 1-2 I 1-3 Flawless Internally Flawless Very Very Slightly Included Very Slightly Included Slightly Included Included



ADDITIONAL GRADING INFORMATION

Polish EXCELLENT Symmetry EXCELLENT Fluorescence NONE Inscription(s) IGI LG806630669 Comments: This Laboratory Grown Diamond was created by Chemical Vapor Deposition (CVD) growth process. Indications of post-growth treatment.



June 9, 2026 IGI Report No. LG806630669 CUT CORNERED RECT. MODIFIED BRILLIANT 7.90 X 5.72 X 3.72 MM 1.51 CARAT FANCY VIVID BLUE VVS 2 65% 61% Slightly Thick Pointed EXCELLENT EXCELLENT NONE NONE IGI LG806630669 Comments: This Laboratory Grown Diamond was created by Chemical Vapor Deposition (CVD) growth process. Indications of post-growth treatment.