



**ELECTRONIC COPY**

LG807609394  
Report verification at igi.org



June 4, 2026

IGI Report Number **LG807609394**

Description **LABORATORY GROWN DIAMOND**

Shape and Cutting Style **OVAL BRILLIANT**

Measurements **9.90 X 6.85 X 4.29 MM**

**GRADING RESULTS**

Carat Weight **1.82 CARAT**

Color Grade **F**

Clarity Grade **VVS 2**

June 4, 2026

IGI Report Number **LG807609394**

Description **LABORATORY GROWN DIAMOND**

Shape and Cutting Style **OVAL BRILLIANT**

Measurements **9.90 X 6.85 X 4.29 MM**

**GRADING RESULTS**

Carat Weight **1.82 CARAT**

Color Grade **F**

Clarity Grade **VVS 2**

**ADDITIONAL GRADING INFORMATION**

Polish **EXCELLENT**

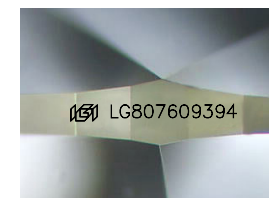
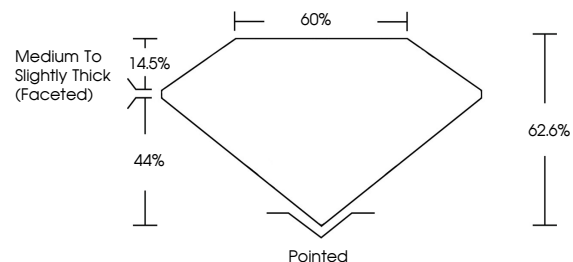
Symmetry **EXCELLENT**

Fluorescence **NONE**

Inscription(s) **IGI LG807609394**

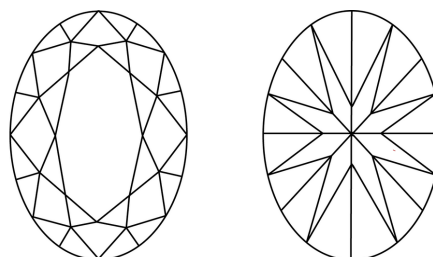
Comments: This Laboratory Grown Diamond was created by Chemical Vapor Deposition (CVD) growth process. Type IIa

**PROPORTIONS**



Sample Image Used

**CLARITY CHARACTERISTICS**



**KEY TO SYMBOLS**

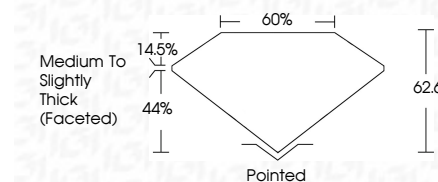
Red symbols indicate internal characteristics.  
Green symbols indicate external characteristics.

**COLOR**

D E F G H I J Faint Very Light Light

**CLARITY**

| FL       | IF                  | VVS <sup>1-2</sup>          | VS <sup>1-2</sup>      | SI <sup>1-2</sup> | I <sup>1-3</sup> |
|----------|---------------------|-----------------------------|------------------------|-------------------|------------------|
| Flawless | Internally Flawless | Very Very Slightly Included | Very Slightly Included | Slightly Included | Included         |



**ADDITIONAL GRADING INFORMATION**

Polish **EXCELLENT**

Symmetry **EXCELLENT**

Fluorescence **NONE**

Inscription(s) **IGI LG807609394**

Comments: This Laboratory Grown Diamond was created by Chemical Vapor Deposition (CVD) growth process. Type IIa



**IGI**



|                           |                       |             |               |       |        |                                    |         |           |           |              |                 |
|---------------------------|-----------------------|-------------|---------------|-------|--------|------------------------------------|---------|-----------|-----------|--------------|-----------------|
| June 4, 2026              | 1.82 CARAT            | F           | VVS 2         | 62.6% | 44%    | 60%                                | Pointed | EXCELLENT | EXCELLENT | NONE         | IGI LG807609394 |
| IGI Report No LG807609394 | 9.90 X 6.85 X 4.29 MM | Color Grade | Clarity Grade | Table | Girdle | Medium to Slightly Thick (Faceted) | Culet   | Polish    | Symmetry  | Fluorescence | Inscription(s)  |

Comments: This Laboratory Grown Diamond was created by Chemical Vapor Deposition (CVD) growth process. Type IIa