



ELECTRONIC COPY

LG807610575
Report verification at igi.org



June 2, 2026

IGI Report Number **LG807610575**

Description **LABORATORY GROWN DIAMOND**

Shape and Cutting Style **EMERALD CUT**

Measurements **8.68 X 6.05 X 3.96 MM**

GRADING RESULTS

Carat Weight **2.04 CARATS**

Color Grade **D**

Clarity Grade **VVS 2**

June 2, 2026
IGI Report Number **LG807610575**
Description **LABORATORY GROWN DIAMOND**
Shape and Cutting Style **EMERALD CUT**
Measurements **8.68 X 6.05 X 3.96 MM**

GRADING RESULTS

Carat Weight **2.04 CARATS**

Color Grade **D**

Clarity Grade **VVS 2**

ADDITIONAL GRADING INFORMATION

Polish **EXCELLENT**

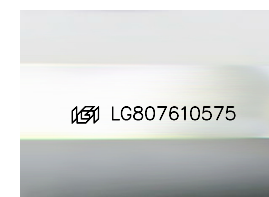
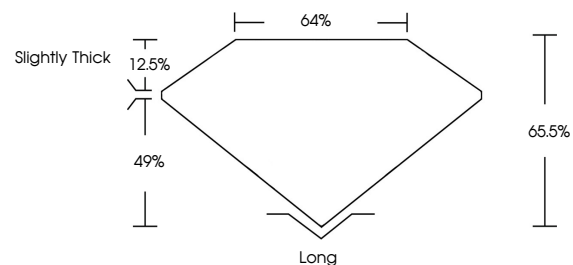
Symmetry **EXCELLENT**

Fluorescence **NONE**

Inscription(s) **IGI LG807610575**

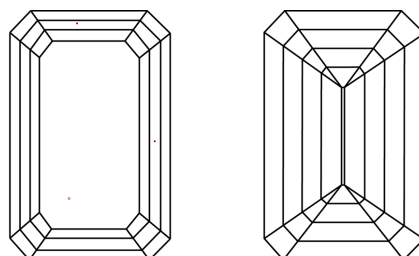
Comments: This Laboratory Grown Diamond was created by Chemical Vapor Deposition (CVD) growth process.
Type IIa

PROPORTIONS



Sample Image Used

CLARITY CHARACTERISTICS



KEY TO SYMBOLS

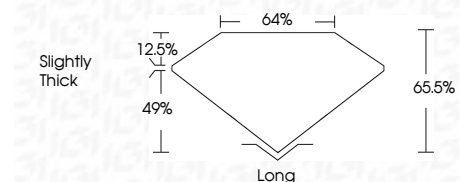
Red symbols indicate internal characteristics.
Green symbols indicate external characteristics.

COLOR

D E F G H I J Faint Very Light Light

CLARITY

FL	IF	VVS ¹⁻²	VS ¹⁻²	SI ¹⁻²	I ¹⁻³
Flawless	Internally Flawless	Very Very Slightly Included	Very Slightly Included	Slightly Included	Included



ADDITIONAL GRADING INFORMATION

Polish **EXCELLENT**

Symmetry **EXCELLENT**

Fluorescence **NONE**

Inscription(s) **IGI LG807610575**

Comments: This Laboratory Grown Diamond was created by Chemical Vapor Deposition (CVD) growth process.
Type IIa



IGI



June 2, 2026
IGI Report No. LG807610575
EMERALD CUT
8.68 X 6.05 X 3.96 MM
Carat Weight 2.04 CARATS
Color Grade D
Clarity Grade VVS 2
Depth 49%
Table 12.5%
Girdle Slightly Thick
Culet Long
Polish EXCELLENT
Symmetry EXCELLENT
Fluorescence NONE
Inscription(s) IGI LG807610575
Comments: This Laboratory Grown Diamond was created by Chemical Vapor Deposition (CVD) growth process.
Type IIa