



**LABORATORY GROWN DIAMOND REPORT**

June 6, 2026  
 IGI Report Number **LG807652248**  
 Description **LABORATORY GROWN DIAMOND**  
 Shape and Cutting Style **OVAL BRILLIANT**  
 Measurements **7.09 X 5.10 X 2.95 MM**

**GRADING RESULTS**

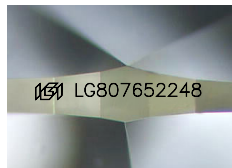
Carat Weight **0.70 CARAT**  
 Color Grade **FANCY VIVID BLUE**  
 Clarity Grade **VS 2**

**ADDITIONAL GRADING INFORMATION**

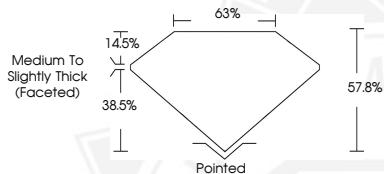
Polish **EXCELLENT**  
 Symmetry **VERY GOOD**  
 Fluorescence **NONE**  
 Inscription(s) **IGI LG807652248**

Comments: This Laboratory Grown Diamond was created by  
 Chemical Vapor Deposition (CVD) growth process.  
 Indications of post-growth treatment.

Secondary color: Green



Sample Image Used



June 6, 2026  
 IGI Report Number **LG807652248**  
**OVAL BRILLIANT**  
**LABORATORY GROWN DIAMOND**  
**7.09 X 5.10 X 2.95 MM**  
 Carat Weight **0.70 CARAT**  
 Color Grade **FANCY VIVID BLUE**  
 Clarity Grade **VS 2**  
 Polish **EXCELLENT**  
 Symmetry **VERY GOOD**  
 Fluorescence **NONE**  
 Inscription(s) **IGI LG807652248**

Comments: This Laboratory Grown  
 Diamond was created by  
 Chemical Vapor Deposition (CVD)  
 growth process. Indications of  
 post-growth treatment.  
 Secondary color: Green



June 6, 2026  
 IGI Report Number **LG807652248**  
**OVAL BRILLIANT**  
**LABORATORY GROWN DIAMOND**  
**7.09 X 5.10 X 2.95 MM**  
 Carat Weight **0.70 CARAT**  
 Color Grade **FANCY VIVID BLUE**  
 Clarity Grade **VS 2**  
 Polish **EXCELLENT**  
 Symmetry **VERY GOOD**  
 Fluorescence **NONE**  
 Inscription(s) **IGI LG807652248**

Comments: This Laboratory Grown  
 Diamond was created by  
 Chemical Vapor Deposition (CVD)  
 growth process. Indications of  
 post-growth treatment.  
 Secondary color: Green



THIS DOCUMENT WAS PRODUCED WITH THE FOLLOWING SECURITY MEASURES: SPECIAL DOCUMENT PAPER, INK SCREENS, WATERMARK, BACKGROUND DESIGNS, HOLOGRAM AND OTHER SECURITY FEATURES NOT LISTED AND DO EXCEED DOCUMENT SECURITY INDUSTRY GUIDELINES.