



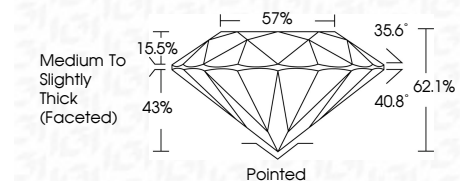
ELECTRONIC COPY

LG807658896 Report verification at igi.org



June 5, 2026 IGI Report Number LG807658896 Description LABORATORY GROWN DIAMOND Shape and Cutting Style ROUND BRILLIANT Measurements 7.36 - 7.42 X 4.59 MM

GRADING RESULTS Carat Weight 1.54 CARAT Color Grade D Clarity Grade VVS 1 Cut Grade IDEAL



ADDITIONAL GRADING INFORMATION Polish EXCELLENT Symmetry EXCELLENT Fluorescence NONE Inscription(s) LG807658896 Comments: As Grown - No indication of post-growth treatment. This Laboratory Grown Diamond was created by High Pressure High Temperature (HPHT) growth process. Type II



June 5, 2026 IGI Report No LG807658896 ROUND BRILLIANT 1.54 CARAT D VVS 1 IDEAL 62.1% 57% Medium To Slightly Thick (Faceted) Pointed EXCELLENT EXCELLENT NONE LG807658896

LABORATORY GROWN DIAMOND REPORT

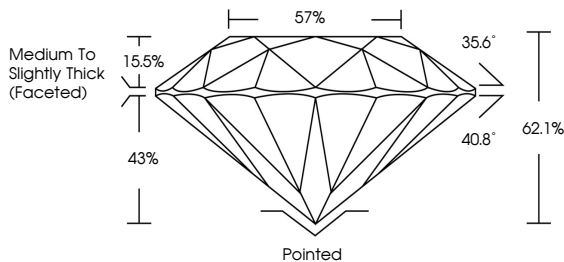
June 5, 2026 IGI Report Number LG807658896 Description LABORATORY GROWN DIAMOND Shape and Cutting Style ROUND BRILLIANT Measurements 7.36 - 7.42 X 4.59 MM

GRADING RESULTS Carat Weight 1.54 CARAT Color Grade D Clarity Grade VVS 1 Cut Grade IDEAL

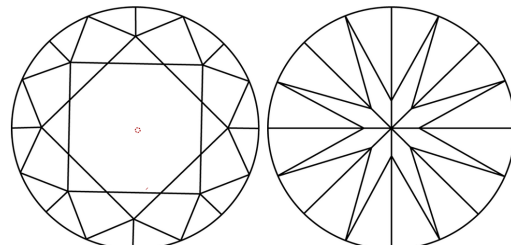
ADDITIONAL GRADING INFORMATION Polish EXCELLENT Symmetry EXCELLENT Fluorescence NONE Inscription(s) LG807658896

Comments: As Grown - No indication of post-growth treatment. This Laboratory Grown Diamond was created by High Pressure High Temperature (HPHT) growth process. Type II

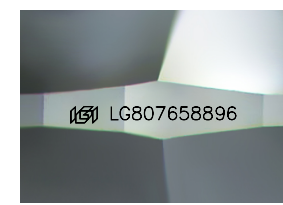
PROPORTIONS



CLARITY CHARACTERISTICS



KEY TO SYMBOLS Red symbols indicate internal characteristics. Green symbols indicate external characteristics.



Sample Image Used

COLOR scale from D to J, with markers for Faint, Very Light, and Light.

CLARITY scale from FL to I 1-3, with markers for Internally Flawless, Very Slightly Included, Slightly Included, and Included.

