



ELECTRONIC COPY

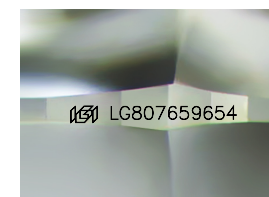
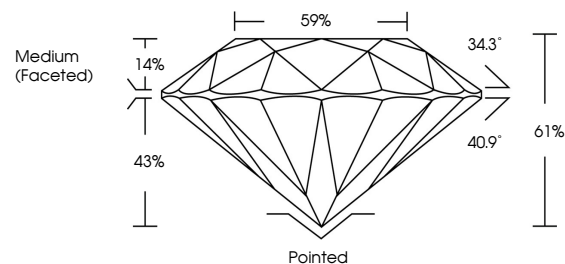
LG807659654
Report verification at igi.org



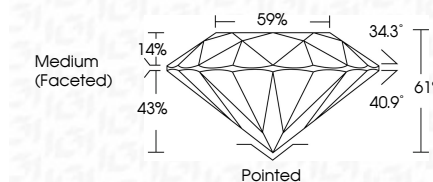
June 8, 2026
IGI Report Number **LG807659654**
Description **LABORATORY GROWN DIAMOND**
Shape and Cutting Style **ROUND BRILLIANT**
Measurements **8.09 - 8.15 X 4.95 MM**
GRADING RESULTS
Carat Weight **2.00 CARATS**
Color Grade **FANCY INTENSE PINK**
Clarity Grade **VS 1**
Cut Grade **IDEAL**

June 8, 2026
IGI Report Number **LG807659654**
Description **LABORATORY GROWN DIAMOND**
Shape and Cutting Style **ROUND BRILLIANT**
Measurements **8.09 - 8.15 X 4.95 MM**
GRADING RESULTS
Carat Weight **2.00 CARATS**
Color Grade **FANCY INTENSE PINK**
Clarity Grade **VS 1**
Cut Grade **IDEAL**

PROPORTIONS



Sample Image Used



ADDITIONAL GRADING INFORMATION

Polish **EXCELLENT**
Symmetry **EXCELLENT**
Fluorescence **SLIGHT**
Inscription(s) **IGI LG807659654**

Comments: This Laboratory Grown Diamond was created by Chemical Vapor Deposition (CVD) growth process. Indications of post-growth treatment.

COLOR

D E F G H I J Faint Very Light Light

CLARITY

| FL | IF | VS ¹⁻² | VS ¹⁻² | SI ¹⁻² | I ¹⁻³ |
|----------|---------------------|-----------------------------|------------------------|-------------------|------------------|
| Flawless | Internally Flawless | Very Very Slightly Included | Very Slightly Included | Slightly Included | Included |

ADDITIONAL GRADING INFORMATION

Polish **EXCELLENT**
Symmetry **EXCELLENT**
Fluorescence **SLIGHT**
Inscription(s) **IGI LG807659654**
Comments: This Laboratory Grown Diamond was created by Chemical Vapor Deposition (CVD) growth process. Indications of post-growth treatment.



June 8, 2026
IGI Report No LG807659654
ROUND BRILLIANT
8.09 - 8.15 X 4.95 MM
2.00 CARATS
FANCY INTENSE PINK
VS 1
IDEAL
61%
59%
Medium (Faceted)
Pointed
EXCELLENT
EXCELLENT
SLIGHT
IGI LG807659654
Comments: This Laboratory Grown Diamond was created by Chemical Vapor Deposition (CVD) growth process. Indications of post-growth treatment.