



ELECTRONIC COPY

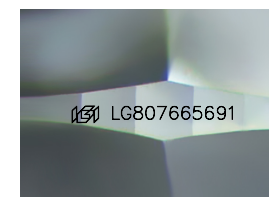
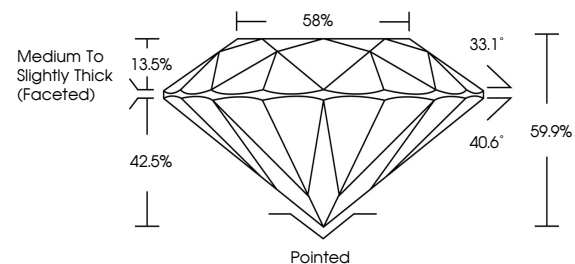
LG807665691
Report verification at igi.org



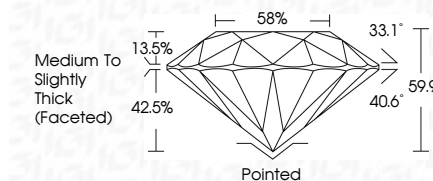
June 8, 2026
IGI Report Number **LG807665691**
Description **LABORATORY GROWN DIAMOND**
Shape and Cutting Style **ROUND BRILLIANT**
Measurements **8.88 - 8.91 X 5.32 MM**
GRADING RESULTS
Carat Weight **2.58 CARATS**
Color Grade **G**
Clarity Grade **VS 1**
Cut Grade **IDEAL**

June 8, 2026
IGI Report Number **LG807665691**
Description **LABORATORY GROWN DIAMOND**
Shape and Cutting Style **ROUND BRILLIANT**
Measurements **8.88 - 8.91 X 5.32 MM**
GRADING RESULTS
Carat Weight **2.58 CARATS**
Color Grade **G**
Clarity Grade **VS 1**
Cut Grade **IDEAL**

PROPORTIONS



Sample Image Used



ADDITIONAL GRADING INFORMATION

Polish **EXCELLENT**
Symmetry **EXCELLENT**
Fluorescence **NONE**
Inscription(s) **IGI LG807665691**

Comments: This Laboratory Grown Diamond was created by Chemical Vapor Deposition (CVD) growth process. Type IIa

ADDITIONAL GRADING INFORMATION

Polish **EXCELLENT**
Symmetry **EXCELLENT**
Fluorescence **NONE**
Inscription(s) **IGI LG807665691**
Comments: This Laboratory Grown Diamond was created by Chemical Vapor Deposition (CVD) growth process. Type IIa

COLOR

D E F G H I J Faint Very Light Light

CLARITY

FL	IF	VS ¹⁻²	VS ¹⁻²	SI ¹⁻²	I ¹⁻³
Flawless	Internally Flawless	Very Very Slightly Included	Very Slightly Included	Slightly Included	Included



IGI



June 8, 2026
IGI Report No LG807665691
ROUND BRILLIANT
8.88 - 8.91 X 5.32 MM
Carat Weight **2.58 CARATS**
Color Grade **G**
Clarity Grade **VS 1**
Depth **59.9%**
Table **58%**
Girdle **Medium To Slightly Thick (Faceted)**
Culet **Pointed**
Polish **EXCELLENT**
Symmetry **EXCELLENT**
Fluorescence **NONE**
Inscriptions(s) **IGI LG807665691**
Comments: This Laboratory Grown Diamond was created by Chemical Vapor Deposition (CVD) growth process. Type IIa