



ELECTRONIC COPY

LG807666374
Report verification at igi.org

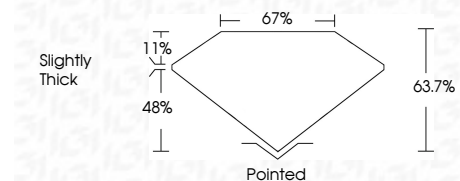


June 5, 2026
IGI Report Number **LG807666374**
Description **LABORATORY GROWN DIAMOND**
Shape and Cutting Style **CUT CORNERED RECTANGULAR MODIFIED BRILLIANT**

Measurements **9.25 X 6.26 X 3.99 MM**

GRADING RESULTS

Carat Weight **2.05 CARATS**
Color Grade **D**
Clarity Grade **VVS 1**



ADDITIONAL GRADING INFORMATION

Polish **EXCELLENT**
Symmetry **EXCELLENT**
Fluorescence **NONE**
Inscription(s) **IGI LG807666374**
Comments: This Laboratory Grown Diamond was created by Chemical Vapor Deposition (CVD) growth process. Type IIa



June 5, 2026
IGI Report No **LG807666374**
CUT CORNERED RECT. MODIFIED BRILLIANT
2.05 CARATS
D
9.25 X 6.26 X 3.99 MM
2.05 CARATS
D
VVS 1
63.7%
48%
11%
Slightly Thick
Pointed
EXCELLENT
EXCELLENT
NONE
IGI LG807666374
Comments: This Laboratory Grown Diamond was created by Chemical Vapor Deposition (CVD) growth process. Type IIa

LABORATORY GROWN DIAMOND REPORT

June 5, 2026
IGI Report Number **LG807666374**
Description **LABORATORY GROWN DIAMOND**
Shape and Cutting Style **CUT CORNERED RECTANGULAR MODIFIED BRILLIANT**
Measurements **9.25 X 6.26 X 3.99 MM**

GRADING RESULTS

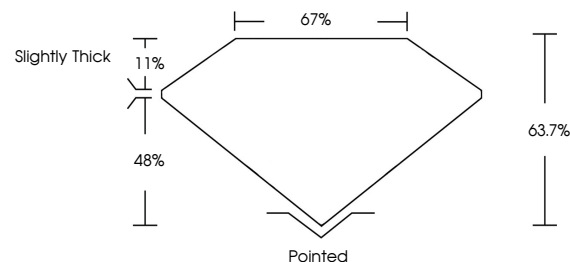
Carat Weight **2.05 CARATS**
Color Grade **D**
Clarity Grade **VVS 1**

ADDITIONAL GRADING INFORMATION

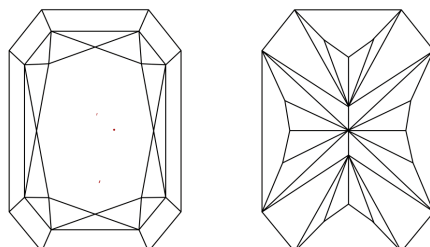
Polish **EXCELLENT**
Symmetry **EXCELLENT**
Fluorescence **NONE**
Inscription(s) **IGI LG807666374**

Comments: This Laboratory Grown Diamond was created by Chemical Vapor Deposition (CVD) growth process. Type IIa

PROPORTIONS

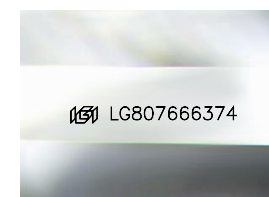


CLARITY CHARACTERISTICS



KEY TO SYMBOLS

Red symbols indicate internal characteristics.
Green symbols indicate external characteristics.



Sample Image Used

COLOR

D E F G H I J Faint Very Light Light

CLARITY

FL IF VVS¹⁻² VS¹⁻² SI¹⁻² I¹⁻³
Flawless Internally Flawless Very Very Slightly Included Very Slightly Included Slightly Included Included

