



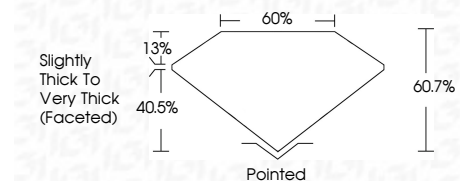
ELECTRONIC COPY

LG807673564 Report verification at igi.org



June 9, 2026 IGI Report Number LG807673564 Description LABORATORY GROWN DIAMOND Shape and Cutting Style PEAR MODIFIED BRILLIANT Measurements 10.88 X 6.59 X 4.00 MM

GRADING RESULTS Carat Weight 2.01 CARATS Color Grade FANCY BROWN Clarity Grade VS 2



ADDITIONAL GRADING INFORMATION Polish EXCELLENT Symmetry EXCELLENT Fluorescence NONE Inscription(s) IGI LG807673564 Comments: This Laboratory Grown Diamond was created by Chemical Vapor Deposition (CVD) growth process. Indications of post-growth treatment.



June 9, 2026 IGI Report No LG807673564 PEAR MODIFIED BRILLIANT 10.88 X 6.59 X 4.00 MM 2.01 CARATS FANCY BROWN VS 2 60.7% 60.7% Slightly Thick To Very Thick (Faceted) Pointed EXCELLENT EXCELLENT NONE NONE IGI LG807673564 Comments: This Laboratory Grown Diamond was created by Chemical Vapor Deposition (CVD) growth process. Indications of post-growth treatment.

LABORATORY GROWN DIAMOND REPORT

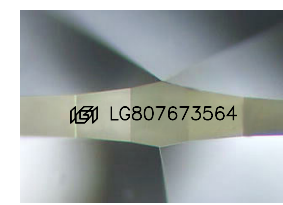
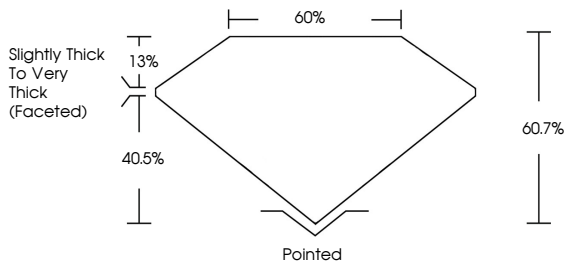
June 9, 2026 IGI Report Number LG807673564 Description LABORATORY GROWN DIAMOND Shape and Cutting Style PEAR MODIFIED BRILLIANT Measurements 10.88 X 6.59 X 4.00 MM

GRADING RESULTS Carat Weight 2.01 CARATS Color Grade FANCY BROWN Clarity Grade VS 2

ADDITIONAL GRADING INFORMATION Polish EXCELLENT Symmetry EXCELLENT Fluorescence NONE Inscription(s) IGI LG807673564

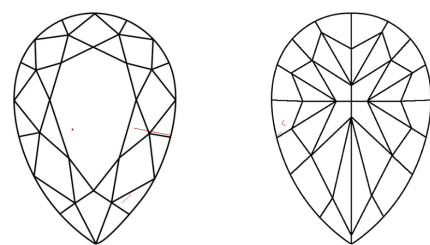
Comments: This Laboratory Grown Diamond was created by Chemical Vapor Deposition (CVD) growth process. Indications of post-growth treatment.

PROPORTIONS



Sample Image Used

CLARITY CHARACTERISTICS



KEY TO SYMBOLS Red symbols indicate internal characteristics. Green symbols indicate external characteristics.

COLOR

Table with color grades: D, E, F, G, H, I, J, Faint, Very Light, Light

CLARITY

Table with clarity grades: FL, IF, VS 1-2, VS 1-2, SI 1-2, I 1-3

