



LABORATORY GROWN DIAMOND REPORT

June 6, 2026
 IGI Report Number **LG807696242**
 Description **LABORATORY GROWN DIAMOND**
 Shape and Cutting Style **PEAR BRILLIANT**
 Measurements **7.97 X 5.01 X 3.23 MM**

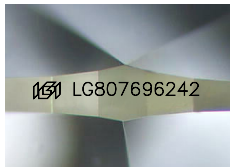
GRADING RESULTS

Carat Weight **0.78 CARAT**
 Color Grade **D**
 Clarity Grade **VVS 2**

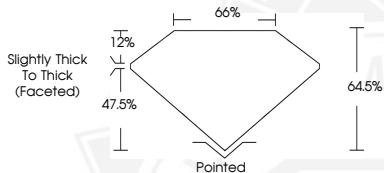
ADDITIONAL GRADING INFORMATION

Polish **VERY GOOD**
 Symmetry **VERY GOOD**
 Fluorescence **NONE**
 Inscription(s) **IGI LG807696242**

Comments: This Laboratory Grown Diamond was created by Chemical Vapor Deposition (CVD) growth process. Type IIa



Sample Image Used



June 6, 2026
 IGI Report Number **LG807696242**
PEAR BRILLIANT
LABORATORY GROWN DIAMOND
7.97 X 5.01 X 3.23 MM
 Carat Weight **0.78 CARAT**
 Color Grade **D**
 Clarity Grade **VVS 2**
 Polish **VERY GOOD**
 Symmetry **VERY GOOD**
 Fluorescence **NONE**
 Inscription(s) **IGI LG807696242**

Comments: This Laboratory Grown Diamond was created by Chemical Vapor Deposition (CVD) growth process. Type IIa



June 6, 2026
 IGI Report Number **LG807696242**
PEAR BRILLIANT
LABORATORY GROWN DIAMOND
7.97 X 5.01 X 3.23 MM
 Carat Weight **0.78 CARAT**
 Color Grade **D**
 Clarity Grade **VVS 2**
 Polish **VERY GOOD**
 Symmetry **VERY GOOD**
 Fluorescence **NONE**
 Inscription(s) **IGI LG807696242**

Comments: This Laboratory Grown Diamond was created by Chemical Vapor Deposition (CVD) growth process. Type IIa



THIS DOCUMENT WAS PRODUCED WITH THE FOLLOWING SECURITY MEASURES: SPECIAL DOCUMENT PAPER, INK SCREENS, WATERMARK, BACKGROUND DESIGNS, HOLOGRAM AND OTHER SECURITY FEATURES NOT LISTED AND DO EXCEED DOCUMENT SECURITY INDUSTRY GUIDELINES.