



**ELECTRONIC COPY**

LG808611667  
Report verification at [igi.org](http://igi.org)



June 9, 2026

IGI Report Number **LG808611667**

Description **LABORATORY GROWN DIAMOND**

Shape and Cutting Style **CUT CORNERED  
RECTANGULAR MODIFIED  
BRILLIANT**

Measurements **10.27 X 7.58 X 4.75 MM**

**GRADING RESULTS**

Carat Weight **3.20 CARATS**

Color Grade **F**

Clarity Grade **VS 1**

June 9, 2026

IGI Report Number **LG808611667**

Description **LABORATORY GROWN DIAMOND**

Shape and Cutting Style **CUT CORNERED RECTANGULAR  
MODIFIED BRILLIANT**

Measurements **10.27 X 7.58 X 4.75 MM**

**GRADING RESULTS**

Carat Weight **3.20 CARATS**

Color Grade **F**

Clarity Grade **VS 1**

**ADDITIONAL GRADING INFORMATION**

Polish **EXCELLENT**

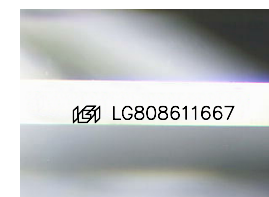
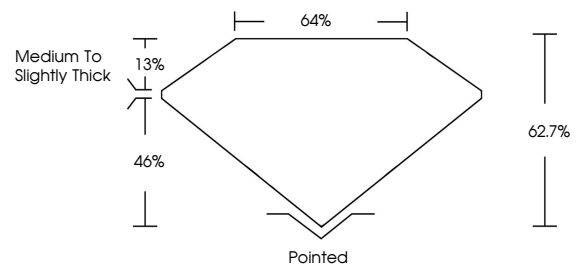
Symmetry **EXCELLENT**

Fluorescence **NONE**

Inscription(s) **IGI LG808611667**

Comments: This Laboratory Grown Diamond was created by Chemical Vapor Deposition (CVD) growth process. Type IIa

**PROPORTIONS**



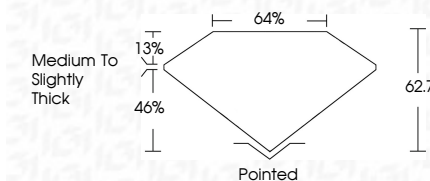
Sample Image Used

**COLOR**

D E F G H I J Faint Very Light Light

**CLARITY**

FL	IF	VS <sup>1-2</sup>	VS <sup>1-2</sup>	SI <sup>1-2</sup>	I <sup>1-3</sup>
Flawless	Internally Flawless	Very Very Slightly Included	Very Slightly Included	Slightly Included	Included



**ADDITIONAL GRADING INFORMATION**

Polish **EXCELLENT**

Symmetry **EXCELLENT**

Fluorescence **NONE**

Inscription(s) **IGI LG808611667**

Comments: This Laboratory Grown Diamond was created by Chemical Vapor Deposition (CVD) growth process. Type IIa



**IGI**



June 9, 2026  
IGI Report No. LG808611667  
CUT CORNERED RECT. MODIFIED BRILLIANT  
10.27 X 7.58 X 4.75 MM  
Carat Weight 3.20 CARATS  
Color Grade F  
Clarity Grade VS 1  
Table 64%  
Depth 13%  
Girdle Medium to Slightly Thick  
Culet Pointed  
Polish EXCELLENT  
Symmetry EXCELLENT  
Fluorescence NONE  
Inscription(s) IGI LG808611667

Comments: This Laboratory Grown Diamond was created by Chemical Vapor Deposition (CVD) growth process. Type IIa