



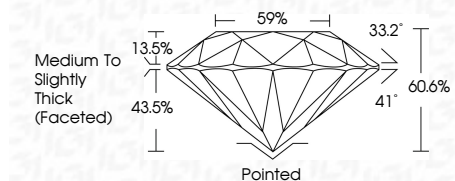
ELECTRONIC COPY

LG816686301 Report verification at igi.org



July 9, 2026 IGI Report Number LG816686301 Description LABORATORY GROWN DIAMOND Shape and Cutting Style ROUND BRILLIANT Measurements 8.19 - 8.27 X 4.97 MM

GRADING RESULTS Carat Weight 2.05 CARATS Color Grade E Clarity Grade VVS 2 Cut Grade IDEAL



ADDITIONAL GRADING INFORMATION Polish EXCELLENT Symmetry EXCELLENT Fluorescence NONE Inscription(s) IGI LG816686301 Comments: This Laboratory Grown Diamond was created by Chemical Vapor Deposition (CVD) growth process. Type IIa



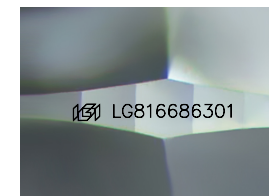
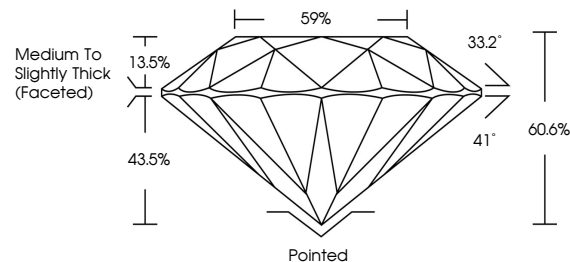
July 9, 2026 IGI Report No LG816686301 ROUND BRILLIANT 8.19 - 8.27 X 4.97 MM 2.05 CARATS E VVS 2 IDEAL 60.6% 59% Medium To Slightly Thick (Faceted) Pointed EXCELLENT EXCELLENT NONE IGI LG816686301 Comments: This Laboratory Grown Diamond was created by Chemical Vapor Deposition (CVD) growth process. Type IIa

July 9, 2026 IGI Report Number LG816686301 Description LABORATORY GROWN DIAMOND Shape and Cutting Style ROUND BRILLIANT Measurements 8.19 - 8.27 X 4.97 MM GRADING RESULTS Carat Weight 2.05 CARATS Color Grade E Clarity Grade VVS 2 Cut Grade IDEAL

ADDITIONAL GRADING INFORMATION Polish EXCELLENT Symmetry EXCELLENT Fluorescence NONE Inscription(s) IGI LG816686301

Comments: This Laboratory Grown Diamond was created by Chemical Vapor Deposition (CVD) growth process. Type IIa

PROPORTIONS



Sample Image Used

COLOR

D E F G H I J Faint Very Light Light

CLARITY

FL IF VS 1-2 VS 1-2 SI 1-2 I 1-3 Flawless Internally Flawless Very Very Slightly Included Very Slightly Included Slightly Included Included

